

LONSEAL[®]

FLOORING

LONPEARL[®]

Durable with a Unique Pearlescent Design

The studded embossing and deeply saturated colors of LONPEARL offer a stylishly textured surface with excellent camouflaging capabilities. Perfect for high-traffic retail areas as well as corporate spaces in search of a dynamic statement.

FEATURES *(data shown is nominal):*

- Roll Width: 6 ft. (1.8 m)
- Roll Length: 60 ft. (18.3 m)
- Overall Thickness: 0.100 in. (2.5 mm)
- Wear Layer Thickness: 0.032 in. (0.8 mm)
- Weight: 0.9 lbs./sq. ft. (4.2 kg/m²)

MEETS FMVSS 302:

CFR 49 §571.302 Flammability of Interior Materials

ASTM F1303 CLASSIFICATION:

Type I, Grade 1, Class B, Commercial Use

CERTIFIED:

FloorScore[®]

EXCLUSIVE LONSEAL FORMULATIONS:

GreenAir[®] & GreenMedic[®]

LEEDv4/4.1 CONTRIBUTION B & C Interiors:

- Environmental Product Declarations Option 1
- Sourcing of Raw Materials Option 2
- Low-Emitting Materials
- Pre-Consumer (Post-Industrial) Recycled Content

** Due to the light color of #P714 Arctic White, more frequent maintenance procedures are necessary to ensure a long-lasting installation. In addition, areas of prolonged UV exposure should be avoided to prevent unwanted discoloration of the flooring.*

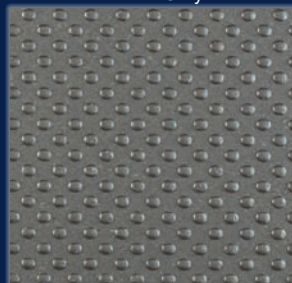




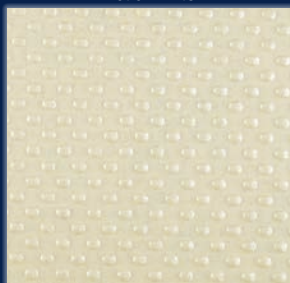
P712
Caspian Mist



P713
Baleen Gray



P714
Arctic White*



P716
Marlin Silver



P717
Orca Blue



P718
Odessa Black

